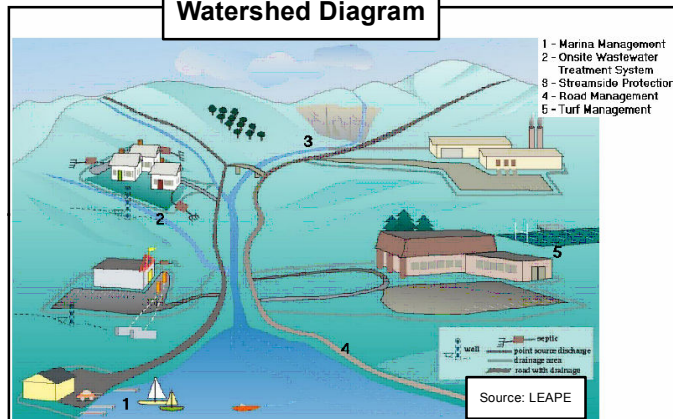


Albany County Watersheds

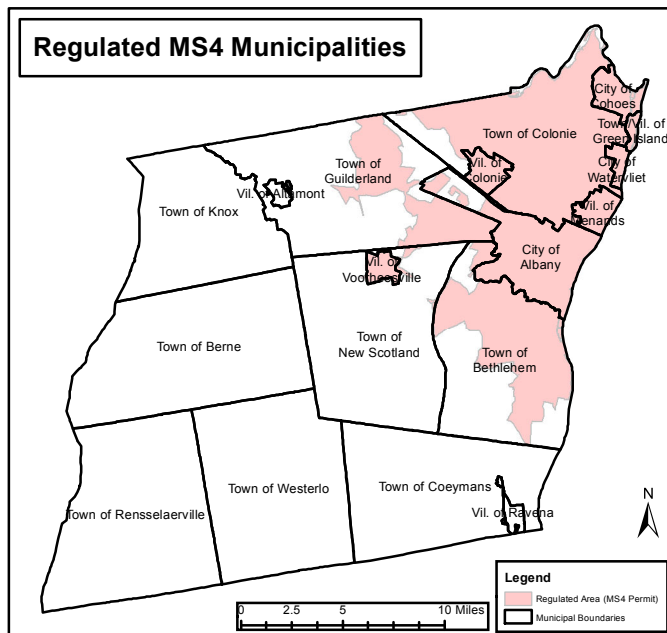
Stormwater Program Implementation

NYS SPDES MS4 Permit No. GP-0-10-002

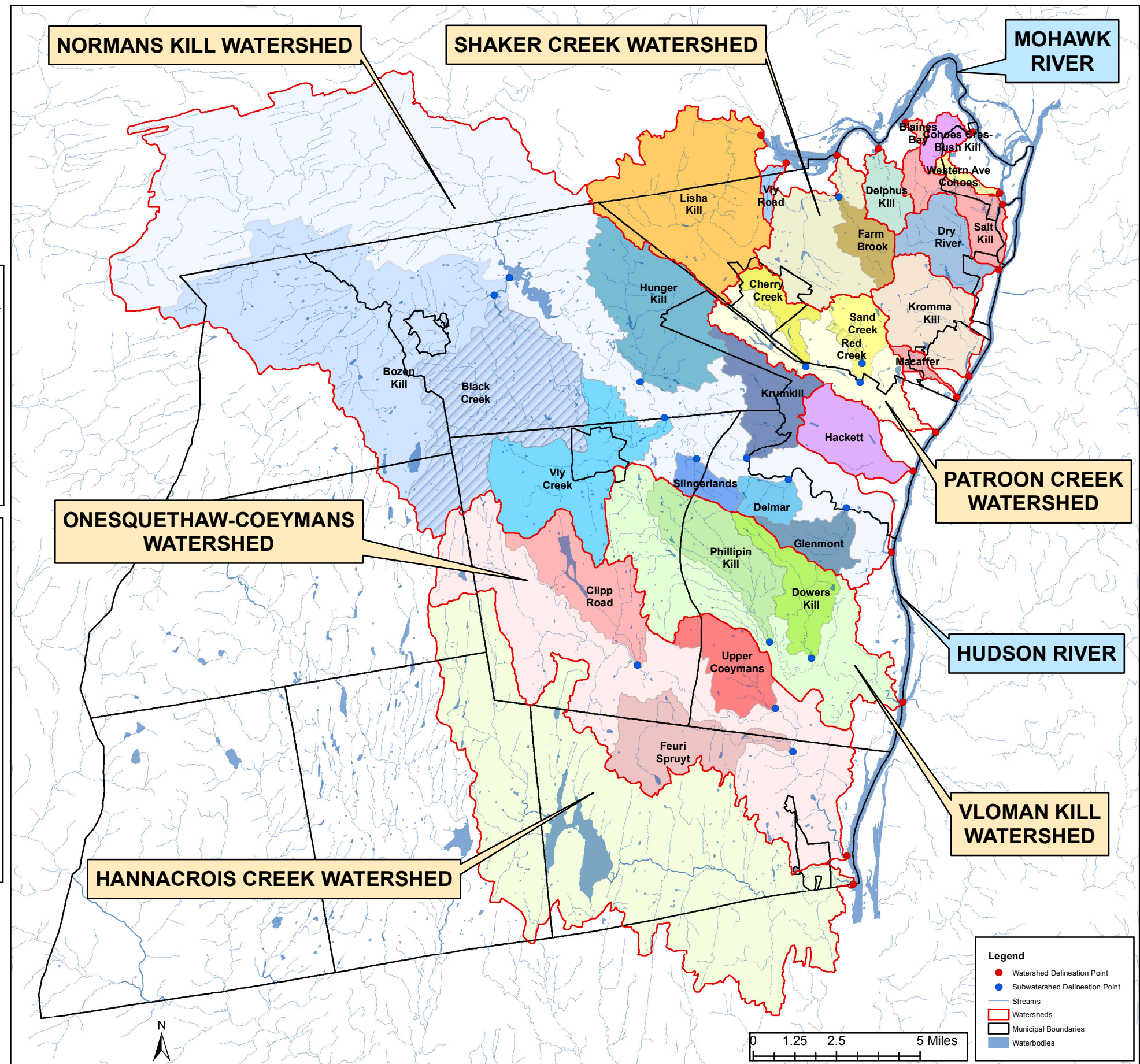
Watershed Diagram



Regulated MS4 Municipalities



Map Notes: The watershed and subwatershed delineations were created using an online mapping system designed by USGS called StreamStats. The delineation points represent drainage of all stormwater within each subwatershed to its confluence with a larger watershed, based on topography.



Stormwater Coalition of Albany County
 Albany County, City of Albany, Town of Bethlehem, City of Cohoes, Town of Colonie, Village of Colonie, Village of Green Island, Town of Guiderland, Village of Menands, Town of New Scotland, Village of Voorheesville, City of Watervliet, SUNY Albany

Prepared by the Stormwater Coalition of Albany County
 Date: March 2011
 File Name: Albany County Watersheds-Stormwater Program Implementation.mxd